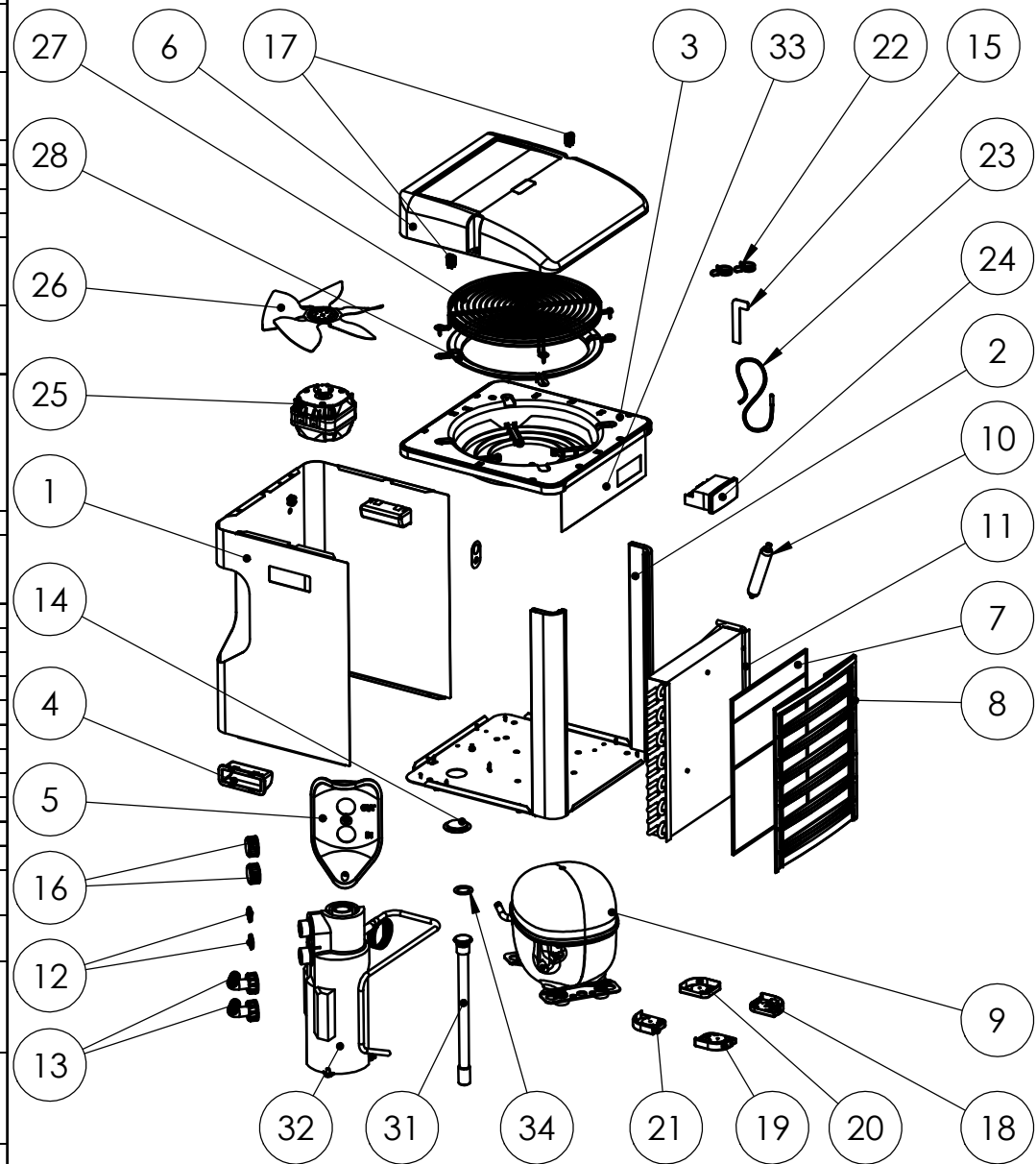


N	CODE	DESCRIZIONE	DESCRIPTION
1	1.2.214	Mantello TK500	Metal fairing TK500
	1.2.215	Mantello TK1000	Metal fairing TK1000
	1.2.216	Mantello TK2000	Metal fairing TK2000
2	1.2.219	Profilato Al TK500	AL profile TK500
	1.2.220	Profilato Al TK1000	AL profile TK1000
	1.2.221	Profilato Al TK2000	AL profile TK2000
3	1.2.222	Supporto ventilatore	Fan support
4	1.2.223	Maniglia TK	Handle
5	1.2.224	Pannello attacchi acqua	In-out water panel
6	1.9.142	Convogliatore aria	Air flow conveyor
7	1.9.144	Filtro aria TK500	Air Filter TK500
		Filtro aria TK1000	Air Filter TK1000
		Filtro aria TK2000	Air Filter TK2000
8	1.9.145	Griglia filtro aria TK500	Air filter grid TK500
	1.9.146	Griglia filtro aria TK1000	Air filter grid TK1000
	1.9.147	Griglia filtro aria TK2000	Air filter grid TK2000
9	2.1.150	Compressore TK500 115V 60Hz	Compressor TK500 115V 60Hz
	2.1.148	Compressore TK500 230V 50-60Hz	Compressor TK500 230V 50-60Hz
	2.1.121	Compressore TK1000 115V 60Hz	Compressor TK1000 115V 60Hz
	2.1.113	Compressore TK1000 230V 50-60Hz	Compressor TK1000 230V 50-60Hz
	2.1.122	Compressore TK2000 115V 60Hz	Compressor TK2000 115V 60Hz
2.1.114	Compressore TK2000 230V 50-60Hz	Compressor TK2000 230V 50-60Hz	
10	2.3.380	Filtro deidratatore 15g due vie CE	Filter dryer 15g two ways CE
11	2.3.320	Condensatore TK500	Condenser TK500
	2.3.321	Condensatore TK1000	Condenser TK1000
	2.3.322	Condensatore TK2000	Condenser TK2000
12	2.4.113	Guarnizione EPDM 3/4"	EPDM gasket 3/4"
13	2.4.142	Portagomma curvo 3/4"x16	Pipe holder 3/4"x16
14	2.9.049	Tappo calotta inferiore scambiatore	Exchanger bottom cap
15	2.9.051	Chiave chiusura 1/4 giro	1/4 turn clip
16	2.9.055	Tappo nylon 3/4"	Nylon cap 3/4"
17	3.5.044	Chiusura 1/4 giro	1/4 turn clip closer
18	3.5.090	Piedino n.1	Foot n.1
19	3.5.091	Piedino n.2	Foot n.2
20	3.5.092	Piedino n.3	Foot n.3
21	3.5.093	Piedino n.4	Foot n.4
22	3.5.095	Fascetta a molla d21,2	Hose clamp d21,2
23	4.1.021	Sonda termostato	Thermostat probe
	4.1.028	Sonda termostato (prima dell'sn E14F0804)	Thermostat probe (before E14F0804)
24		Termostato	Thermostat
		Vedere tabella termostati	See Thermostat Table
25	4.3.161	Ventilatore TK500 - TK1000 115V 60Hz	Fan motor TK500 - TK1000 115V 60Hz
	4.3.142	Ventilatore TK500 - TK1000 230V 50-60Hz	Fan motor TK500 - TK1000 230V 50-60Hz
	4.3.162	Ventilatore TK2000 115V 60Hz	Fan motor TK2000 115V 60Hz
	4.3.119	Ventilatore TK2000 230V 50-60Hz	Fan motor TK2000 230V 50-60Hz
26	4.3.167	Ventola TK500 -TK1000 115V-60Hz /230V-60Hz	Fan blade TK500 - TK1000 115V-60Hz/230V-60Hz
	4.3.159	Ventola TK500 -TK1000 230V-50Hz	Fan blade TK500 - TK1000 230V 50Hz
	4.3.168	Ventola TK2000 115V 60Hz /230V-60Hz	Fan blade TK2000 115V 60Hz /230V-60Hz
	4.3.127	Ventola TK2000 230V 50Hz	Fan blade TK2000 230V 50Hz
27	4.9.047	Griglia ventilatore	Fan grid
28	4.9.049	Anello riduzione ventola	Fan reducing ring
29	6.3.050	Imballo singolo	Packaging box
30	6.9.014	Imballo polistirolo	Styrofoam packaging
31	KRES01#TK4	Kit resistenza TK 230V 50-60Hz	Heater kit TK 230V 50-60Hz
	KRES01#TK5	Kit resistenza TK 115V 50-60Hz	Heater kit TK 115V 50-60Hz
32	SSCA12#201X	Scambiatore TK500	Exchanger TK500
	SSCA12#301X	Scambiatore TK1000	Exchanger TK1000
	SSCA12#401X	Scambiatore TK2000	Exchanger TK2000
33	SSER01#20	Pannello frontale TK500	Front panel TK500
	SSER01#30	Pannello frontale TK1000	Front panel TK1000
	SSER01#40	Pannello frontale TK2000	Front panel TK2000
34	3.5.038	Rondella nylon per tappo resistenza	Nylon washer



Material:	Drawing:Spare parts TK500-1000-2000		
Thickness:	File: Spare_parts_TK500_1000_2000		
Finishing:	Your code:	Code:	
Volume:	Tol.	Scale: 1:10	Date: 13/04/2017
Approved:	Via A.Sansovino, 35 48124 RAVENNA - ITALY Tel. +39 0544 408333 Fax 280084 http://www.teconline.com		
	Drawer: Matteo		

AS BY LAW ENACTED WE RESERVE US THE PROPERTY OF THIS DOCUMENT WITH THE PROHIBITION OF REPRODUCE IT, SAVE IT INTO ACHIVES SYSTEM, GIVE IT OR HOWEVER LENT IT TO THIRD PARTY WITHOUT OUR AUTHORIZATION. EVERY VIOLATION INVOLVES THE COMPENSATION FOR THE UNDERGONE DAMAGES.WE MAKE RESERVATIONS ABOUT ALL THE RIGHTS DERIVING FROM PATENTS OR MODELS.

Drawer: Modify: