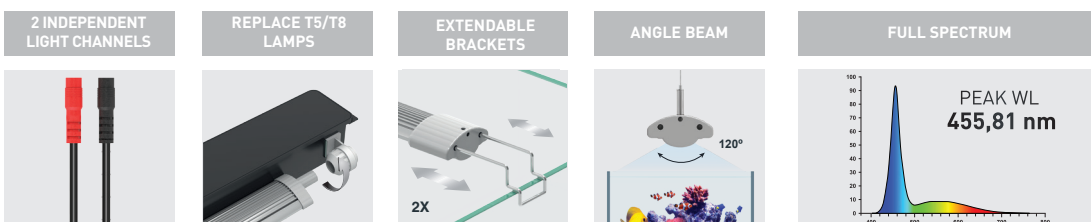
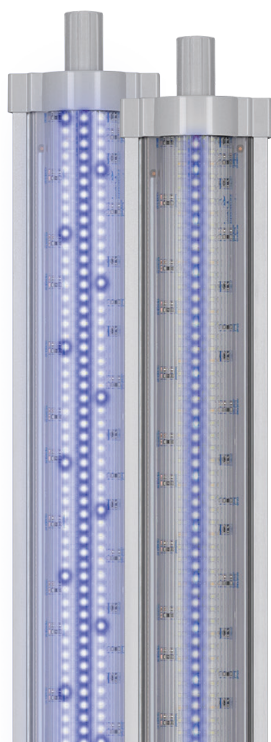


EASY LED UNIVERSAL 2.0

MARINE BLUE



SECURE



ECONOMIC



ECOLOGIC



LOW CONSUMPTION

FOR ALL
AQUARIUM
BRANDS

NOT INCLUDED

KIT STAINLESS STEEL CABLE



Code: 10840

Compatible with

LUMINUS
SMART LED CONTROLLER

Code: 11649



DIMENSION	AQUARIUM MINIMUM LENGTH*	AQUARIUM MAXIMUM LENGTH*	POWER	T5 LAMPS REPLACEMENT	T8 LAMPS REPLACEMENT	PRODUCT CODE
438mm	45cm	70cm	24W	24W	15W	12375
590mm	60cm	85cm	32W	28W	18W	12376
742mm	75cm	100cm	40W	35W	25W	12377
895mm	90cm	115cm	50W	45W	30W	12378
1047mm	105cm	130cm	58W	54W	-	12379
1200mm	120cm	145cm	66W	54W	36W	12380
1450mm	145cm	170cm	82W	80W	-	12381

*Without EASY LED UNIVERSAL end caps

EASY LED UNIVERSAL 2.0

SPARE PARTS

EXTENSION CABLE | 10847



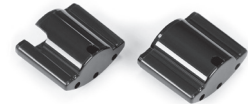
SPLITTER CABLE B/B | 11146



SPLITTER CABLE R/B | 12952



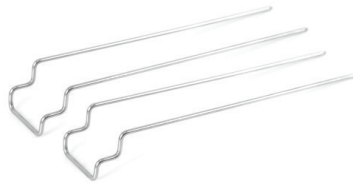
PLASTIC END CAPS | 10841



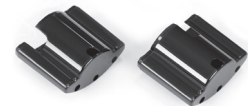
KIT STAINLESS STEEL CABLE | 10840



EXTENDABLE BRACKETS | 14036



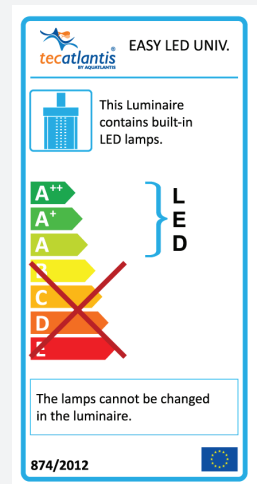
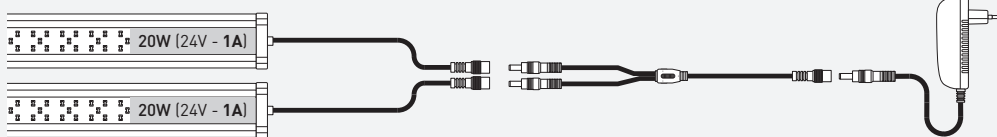
PLASTIC END CAPS (1200/1450mm) | 10842



When using the SPLITTER CABLE, the adaptor must be appropriate.

INPUT = OUTPUT

Exemple:



ADAPTORS

Adaptor 1A 24V	Adaptor 1,5A 24V	Adaptor 2A 24V	Adaptor 2,5A 24V	Adaptor 3,75A 24V	Adaptor 5A 24V
EASY LED UNIVERSAL 438	EASY LED UNIVERSAL 590 EASY LED UNIVERSAL 1200*	EASY LED UNIVERSAL 742 EASY LED UNIVERSAL 895 EASY LED UNIVERSAL 1450*	EASY LED UNIVERSAL 1047	If a SPLITTER CABLE is used	If a SPLITTER CABLE is used
10024	10025	10026	10027	11158	11242

* 2x Adaptor