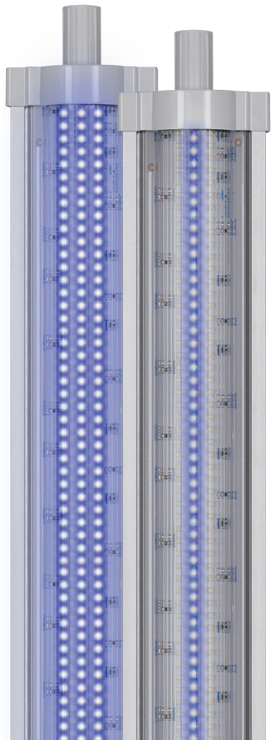
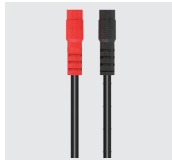
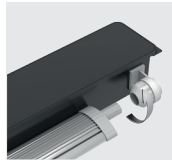
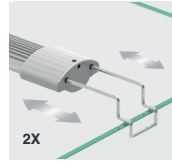
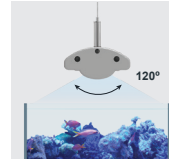
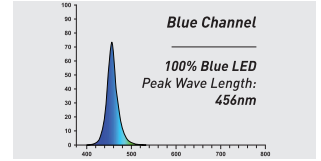


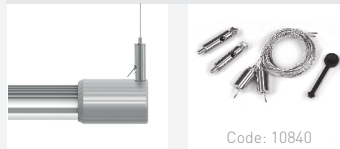
# EASY LED UNIVERSAL 2.0

## DEEP BLUE


**2 INDEPENDENT  
LIGHT CHANNELS**

**REPLACE T5/T8  
LAMPS**

**EXTENDABLE  
BRACKETS**

**ANGLE BEAM**

**100% BLUE**

**SECURE**

**ECONOMIC**

**ECOLOGIC**

**LOW  
CONSUMPTION**
**FOR ALL  
AQUARIUM  
BRANDS**
**NOT INCLUDED**
**KIT STAINLESS STEEL CABLE**


Code: 10840

Compatible with

**LUMINUS  
SMART LED CONTROLLER**

Code: 11649



DIMENSION	AQUARIUM MINIMUM LENGTH*	AQUARIUM MAXIMUM LENGTH*	POWER	T5 LAMPS REPLACEMENT	T8 LAMPS REPLACEMENT	PRODUCT CODE
438mm	45cm	70cm	20W	24W	15W	12382
590mm	60cm	85cm	28W	28W	18W	12383
742mm	75cm	100cm	36W	35W	25W	12384
895mm	90cm	115cm	44W	45W	30W	12385
1047mm	105cm	130cm	52W	54W	-	12386
1200mm	120cm	145cm	62W	54W	36W	12387
1450mm	145cm	170cm	72W	80W	-	12388

\*Without EASY LED UNIVERSAL end caps

# EASY LED UNIVERSAL 2.0

## SPARE PARTS

EXTENSION CABLE | 10847



SPLITTER CABLE B/B | 11146



SPLITTER CABLE R/B | 12952



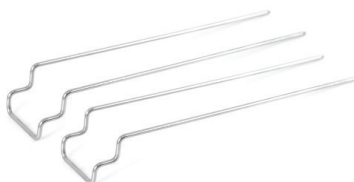
PLASTIC END CAPS | 10841



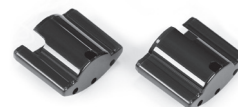
KIT STAINLESS STEEL CABLE | 10840



EXTENDABLE BRACKETS | 14036



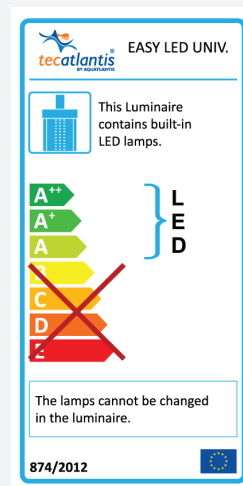
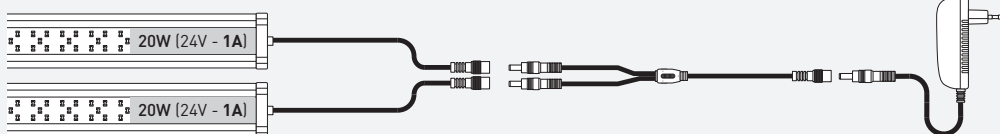
PLASTIC END CAPS (1200/1450mm) | 10842



When using the SPLITTER CABLE, the adaptor must be appropriate.

**INPUT = OUTPUT**

Exemple:



## ADAPTORS

Adaptor 1A	Adaptor 1,5A	Adaptor 2A	Adaptor 2,5A	Adaptor 3,75A	Adaptor 5A
24V	24V	24V	24V	24V	24V
EASY LED UNIVERSAL 438	EASY LED UNIVERSAL 590 EASY LED UNIVERSAL 1200*	EASY LED UNIVERSAL 742 EASY LED UNIVERSAL 895 EASY LED UNIVERSAL 1450*	EASY LED UNIVERSAL 1047	If a SPLITTER CABLE is used	If a SPLITTER CABLE is used
10024	10025	10026	10027	11158	11242

\* 2x Adaptor